



Influenza Surveillance Report

January 6 (updated 1/13/10), 2010

Outpatient Influenza-Like Illness (ILI) Surveillance

- For the week ending 1/2/10, visits to doctors for influenza-like illness (ILI) in New Mexico decreased from 4.8% to 3.9% (Figure 1). Preliminary numbers for Week ending 1/9/10 show continued low level activity.
- The Southeast region experienced an increase in the percentage of outpatient visits for ILI while all other regions experienced a decrease (Figure 2). The percentages of outpatient visits for ILI in New Mexico regions were: 0.3% in Northeast, 4.7% in Northwest, 4.7% in Central, 1.6% in Southwest and 8.5% in Southeast. It is too early to report on regional changes for week ending 1/9/10.

Laboratory-confirmed Influenza Hospitalization Surveillance

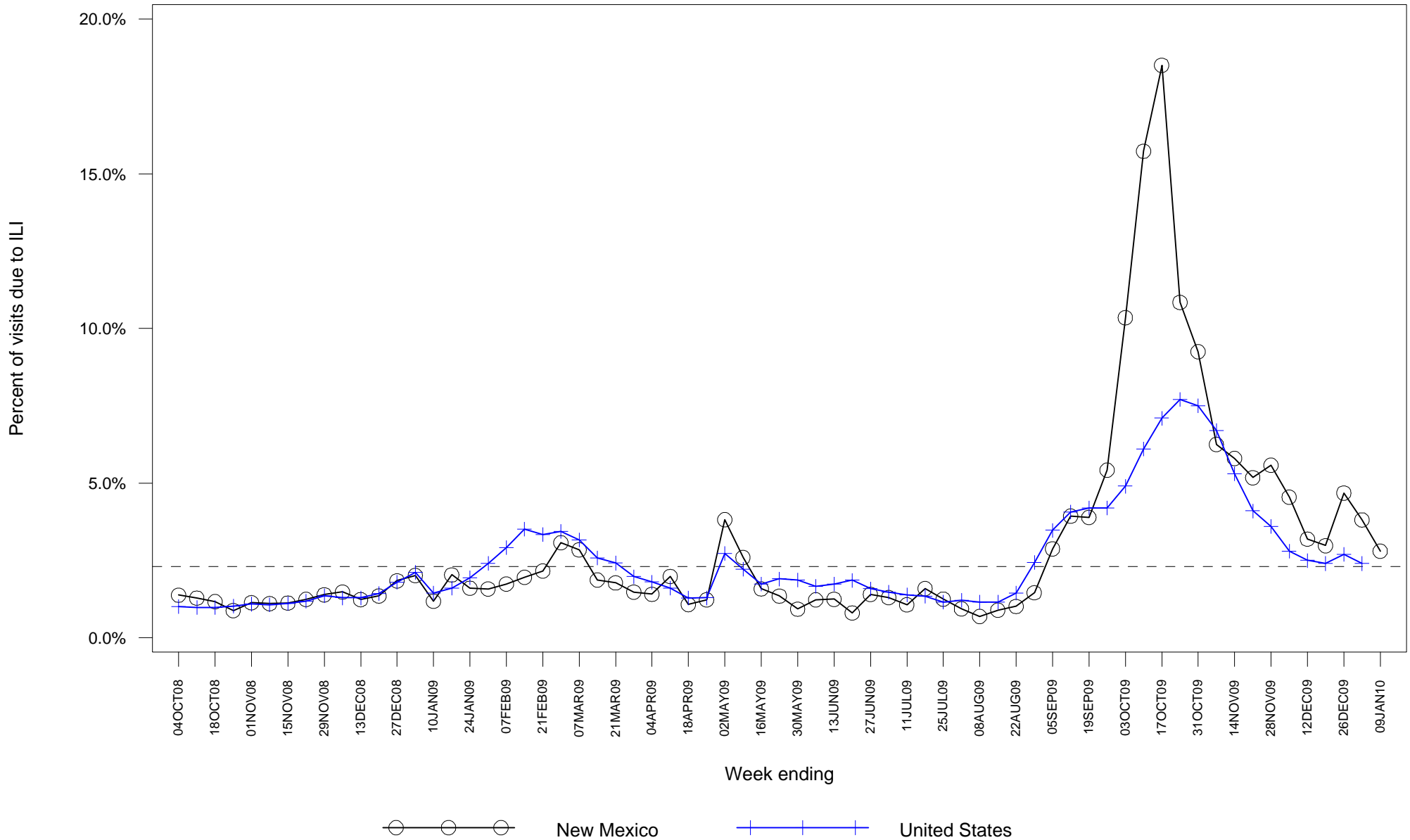
- Starting 10/12/09 the case definition for laboratory-confirmed influenza hospitalizations was expanded to include patients with positive rapid influenza and influenza fluorescent antibody tests. Previously the case definition only considered positive RT-PCR and viral culture results as confirmatory. This change was made to more accurately represent the burden of influenza-related hospitalizations in New Mexico.
- As of 1/6/10, there have been 982 hospitalizations related to laboratory-confirmed influenza infection in New Mexico, an increase of 10 from last week. The number of hospitalizations occurring during the week ending 1/2/10 decreased compared to the previous week (Figure 3). Table 1 summarizes hospitalizations by county of residence.

Laboratory-confirmed Influenza Death Surveillance

- As of 1/11/10, there have been 51 deaths related to laboratory-confirmed influenza infection in New Mexico. No new deaths were reported this week. Table 2 summarizes deaths by county of residence.

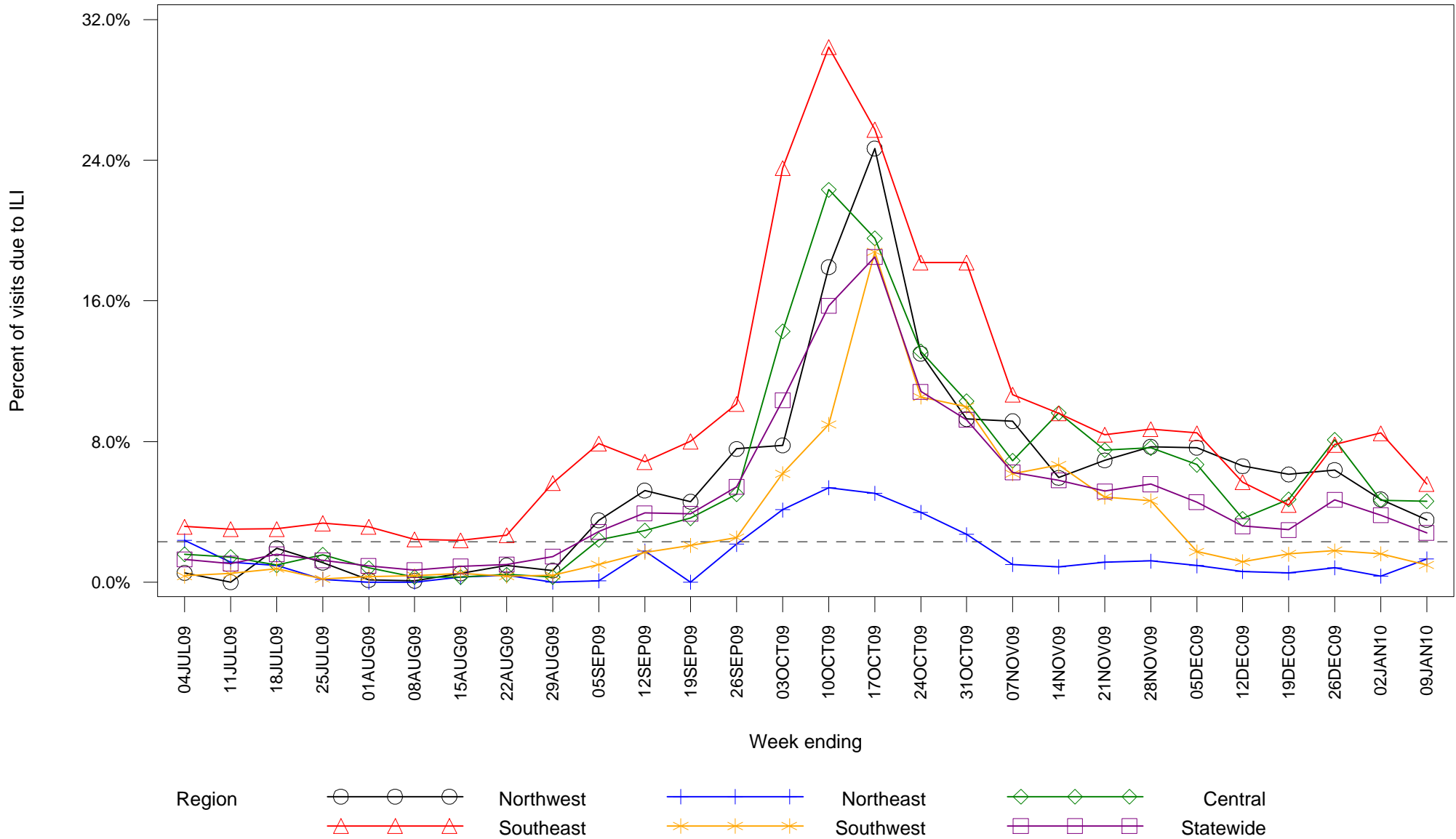
Any questions, please direct to Catherine.avery@state.nm.us

**Figure 1: Percent of sentinel provider outpatient visits due to influenza-like illness (ILI)
New Mexico and United States**



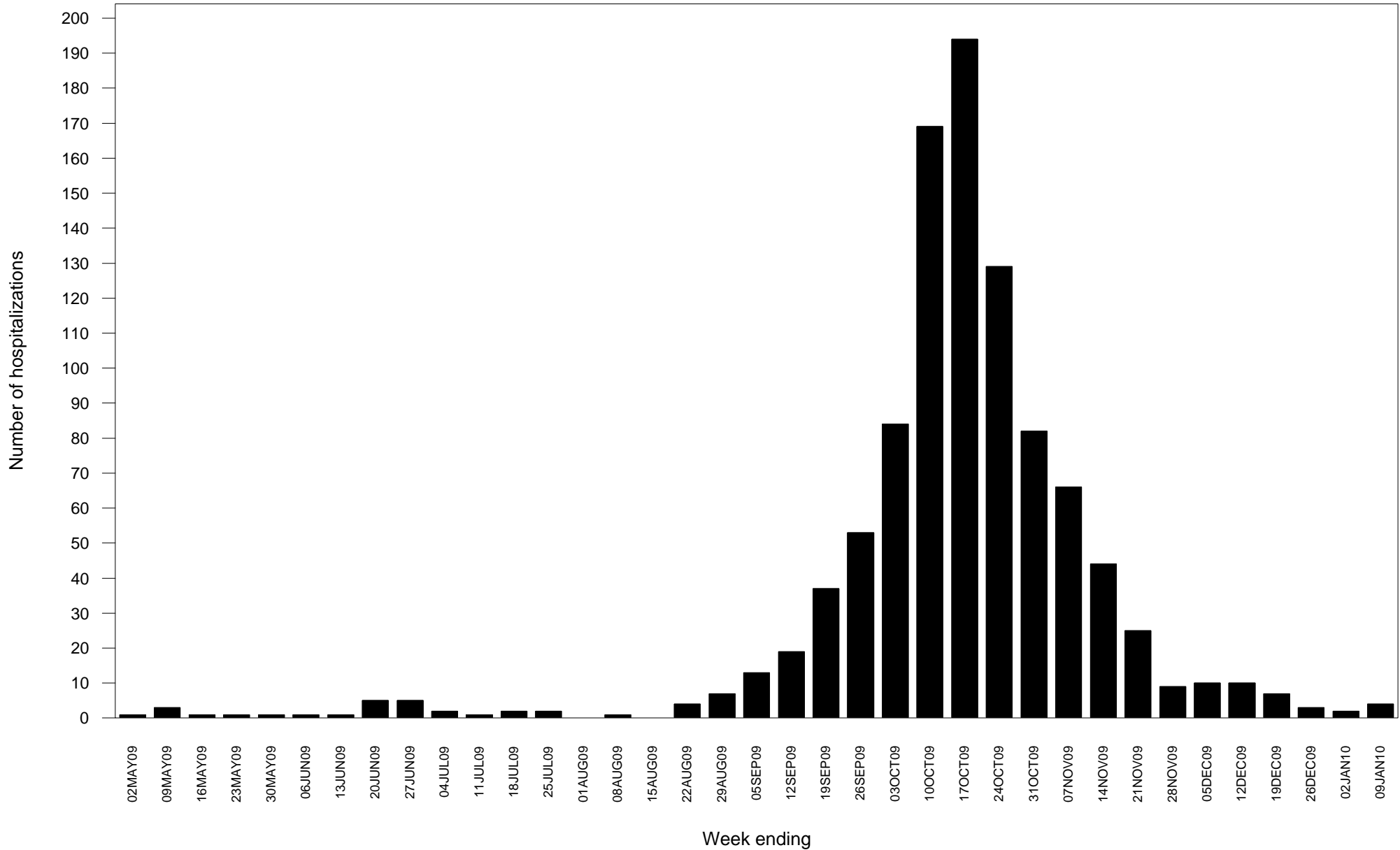
Dashed line indicates national baseline value of 2.3%. Reporting of US data is delayed a week.

Figure 2: Percent of sentinel provider outpatient visits due to influenza-like illness (ILI) New Mexico



Dashed line indicates national baseline value of 2.3%. The Southeast region consistently reports ILI visit percentages that are higher than other regions so differences between regions should be interpreted with caution.

**Figure 3: Laboratory-confirmed influenza hospitalizations by admission date
New Mexico**



Report date substituted for admission date for 18 hospitalizations for which admission date has not yet been determined.

**Table 1: Cumulative laboratory-confirmed influenza hospitalizations by county of residence
New Mexico**

County	Number
Bernalillo County	248
Catron County	4
Chaves County	17
Cibola County	16
Colfax County	22
Curry County	56
Dona Ana County	126
Eddy County	30
Grant County	19
Guadalupe County	1
Hidalgo County	2
Lea County	32
Lincoln County	6
Los Alamos County	4
Luna County	14
McKinley County	75
Mora County	1
Otero County	28
Quay County	7
Rio Arriba County	22
Roosevelt County	9
San Juan County	67
San Miguel County	9
Sandoval County	41

(Continued)

**Table 1: Cumulative laboratory-confirmed influenza hospitalizations by county of residence
New Mexico**

County	Number
Santa Fe County	52
Sierra County	14
Socorro County	16
Taos County	24
Torrance County	2
Unknown	2
Valencia County	32
Total	998

**Table 2: Cumulative laboratory-confirmed influenza deaths by county of residence
New Mexico**

County	Number
Bernalillo County	19
Chaves County	3
Colfax County	1
Curry County	1
Dona Ana County	4
Eddy County	1
Lea County	2
Los Alamos County	1
Luna County	1
McKinley County	2
Quay County	1
Rio Arriba County	1
Roosevelt County	1
San Juan County	3
Sandoval County	2
Santa Fe County	4
Sierra County	1
Socorro County	1
Valencia County	2
Total	51