

# Influenza Surveillance in New Mexico

Seasonal Summary: 2009-2010 Season  
“The Year-Long Season”

Katie Avery, MS, CFNP  
Influenza Surveillance Program  
New Mexico Department of Health (NMDOH)

# Outline

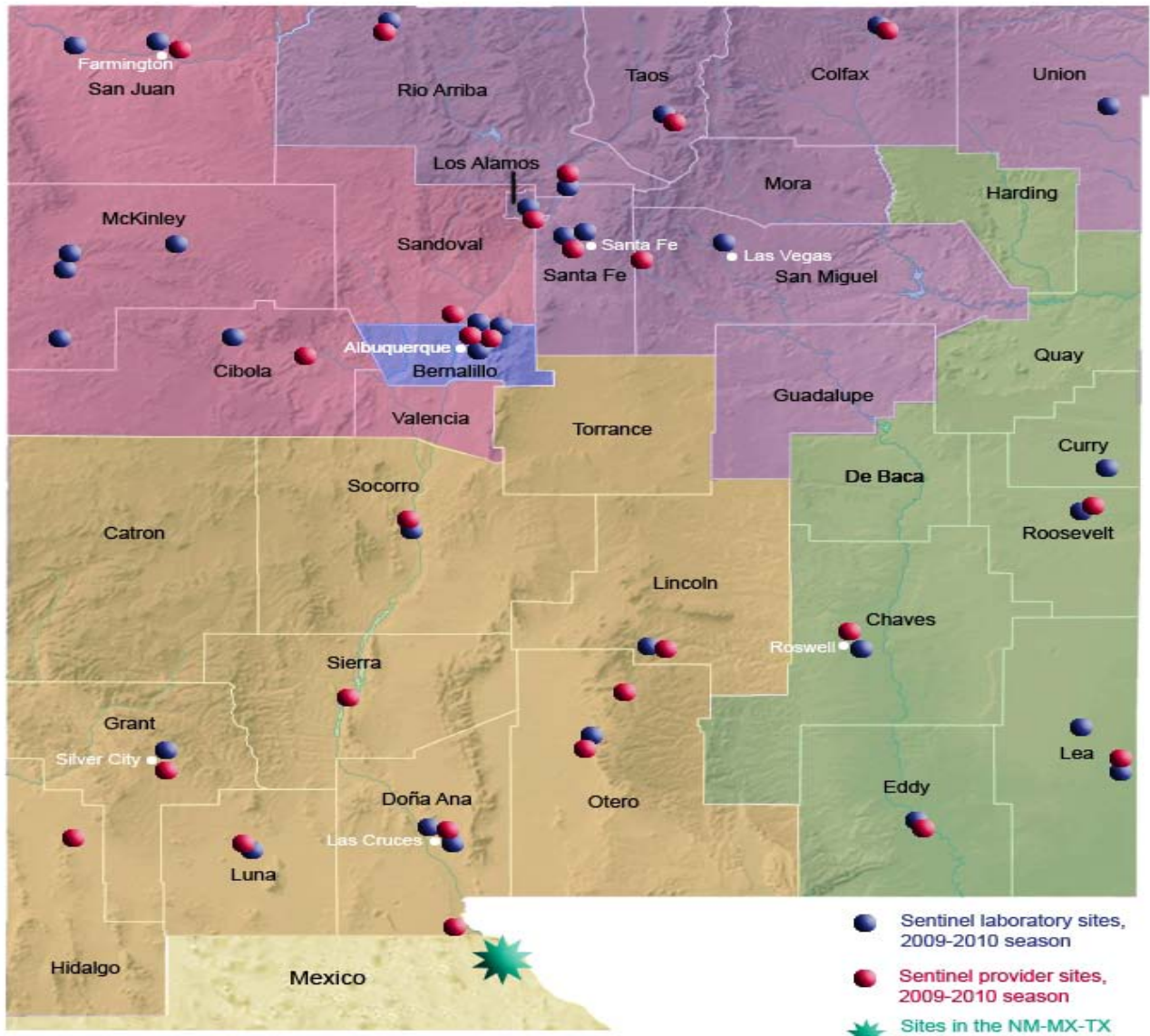
- Review influenza surveillance data systems utilized in the 'year-long' season
- Present influenza activity in the 2009-10 season: indicators of intensity, severity and impact
- Compare seasonal activity trends: 2009-10 with past seasons

# Objectives of the NMDOH Influenza Surveillance System

- Monitor intensity, severity and impact of flu
- Identify circulating types and strains
- Data dissemination
- Prevention and control guidance
- Pandemic readiness

# Influenza Surveillance Systems

- **Influenza-like illness Network (ILI Net)**
  - ILI is fever and cough and/or sore throat
  - 26-28 sentinel sites throughout the state
  - Submission of cultures from ILI patients
- **Laboratory testing**
  - Summary reporting of tests performed and # positive
  - 30 lab reporting sites

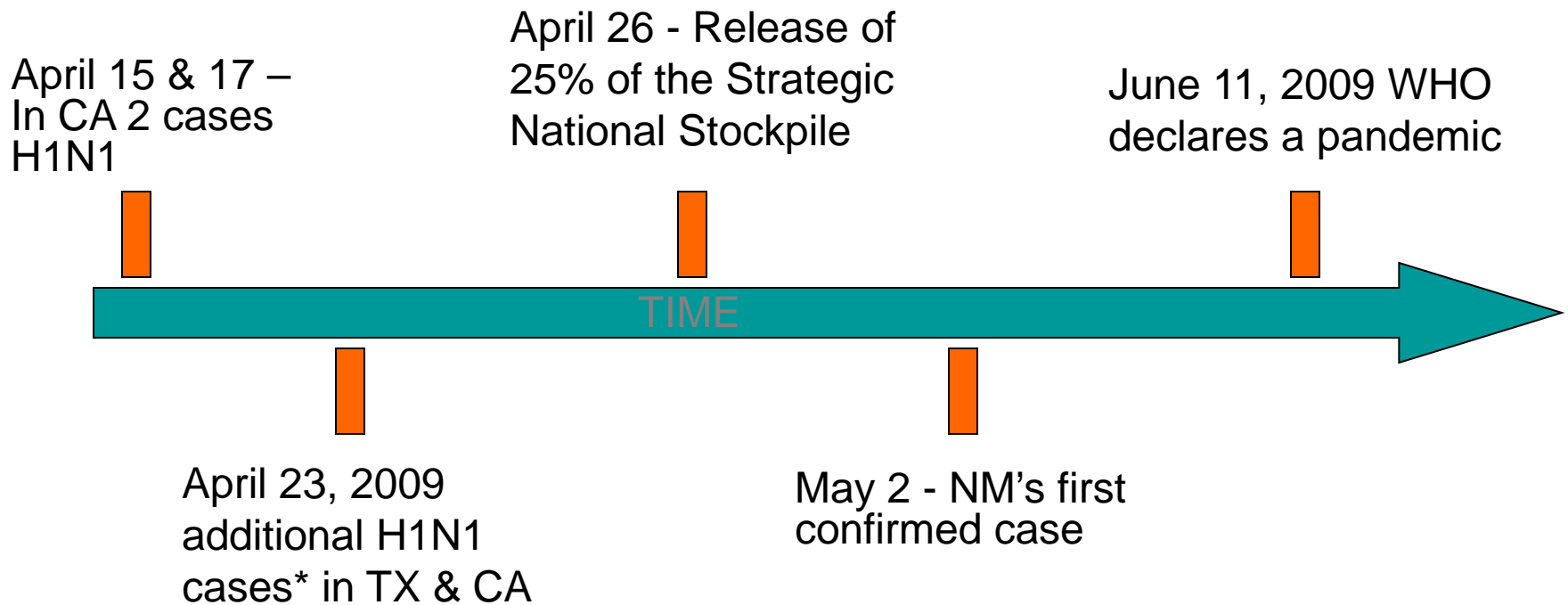


-  Sentinel laboratory sites, 2009-2010 season
-  Sentinel provider sites, 2009-2010 season
-  Sites in the NM-MX-TX Border Region

# Influenza Surveillance Systems (cont'd)

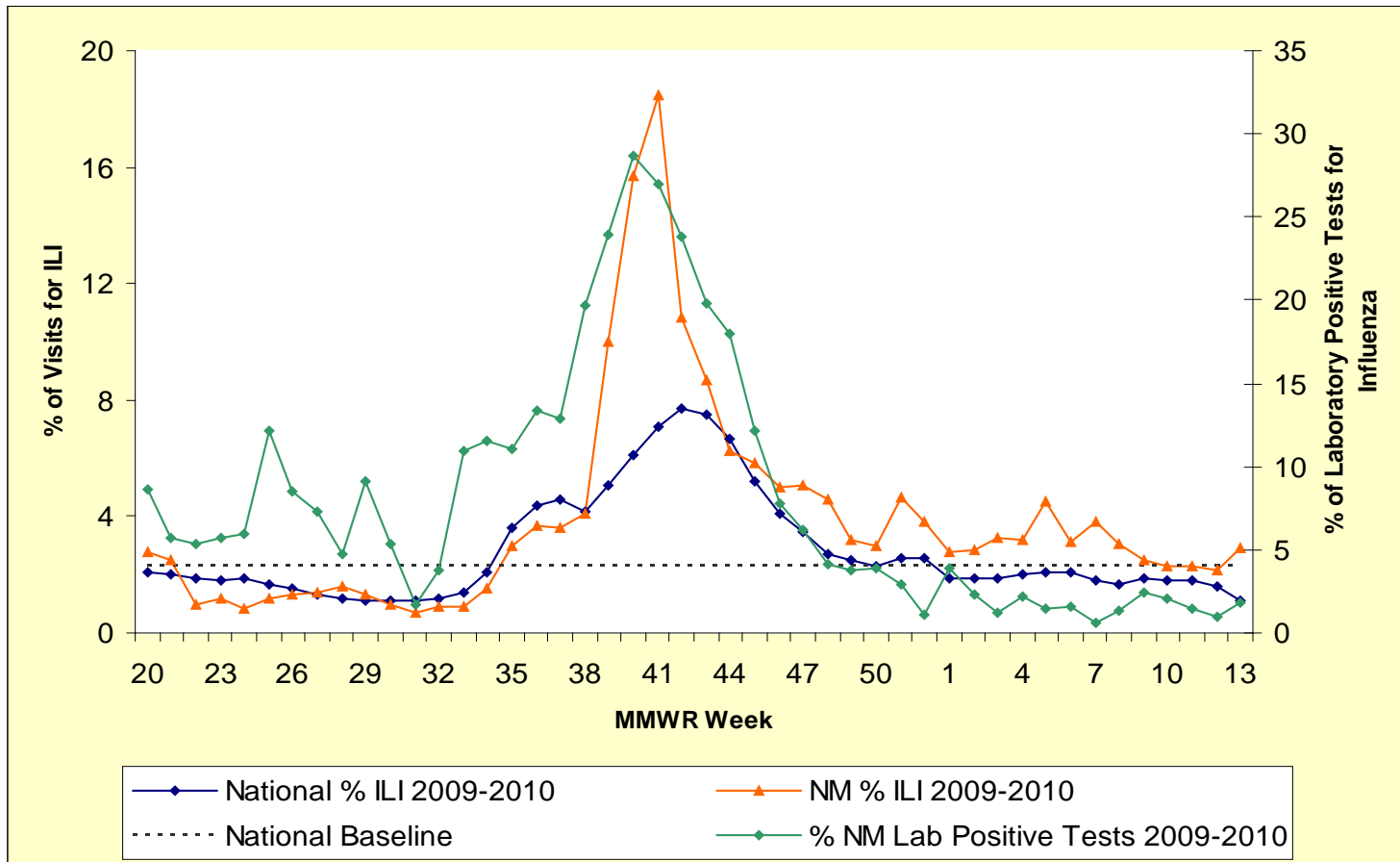
- **Influenza deaths** – Vital Records (VRHS) and Office of the Medical Investigator (OMI)
  - Death certificates from Vital Records
  - Viral cultures on suspicious deaths at OMI
- **Border surveillance**
  - 16 sites along the US/Mexico border
  - ILI aggregate reporting; specimens to State Lab
- **Hospital Surveillance/ Emerging Infections Program (EIP)**
  - Started with pediatric cases in Bernalillo County, 2004
  - Expanded to 6 counties (50% of population) in 2008
  - Statewide surveillance for 2009-10 season

# H1N1 Timeline

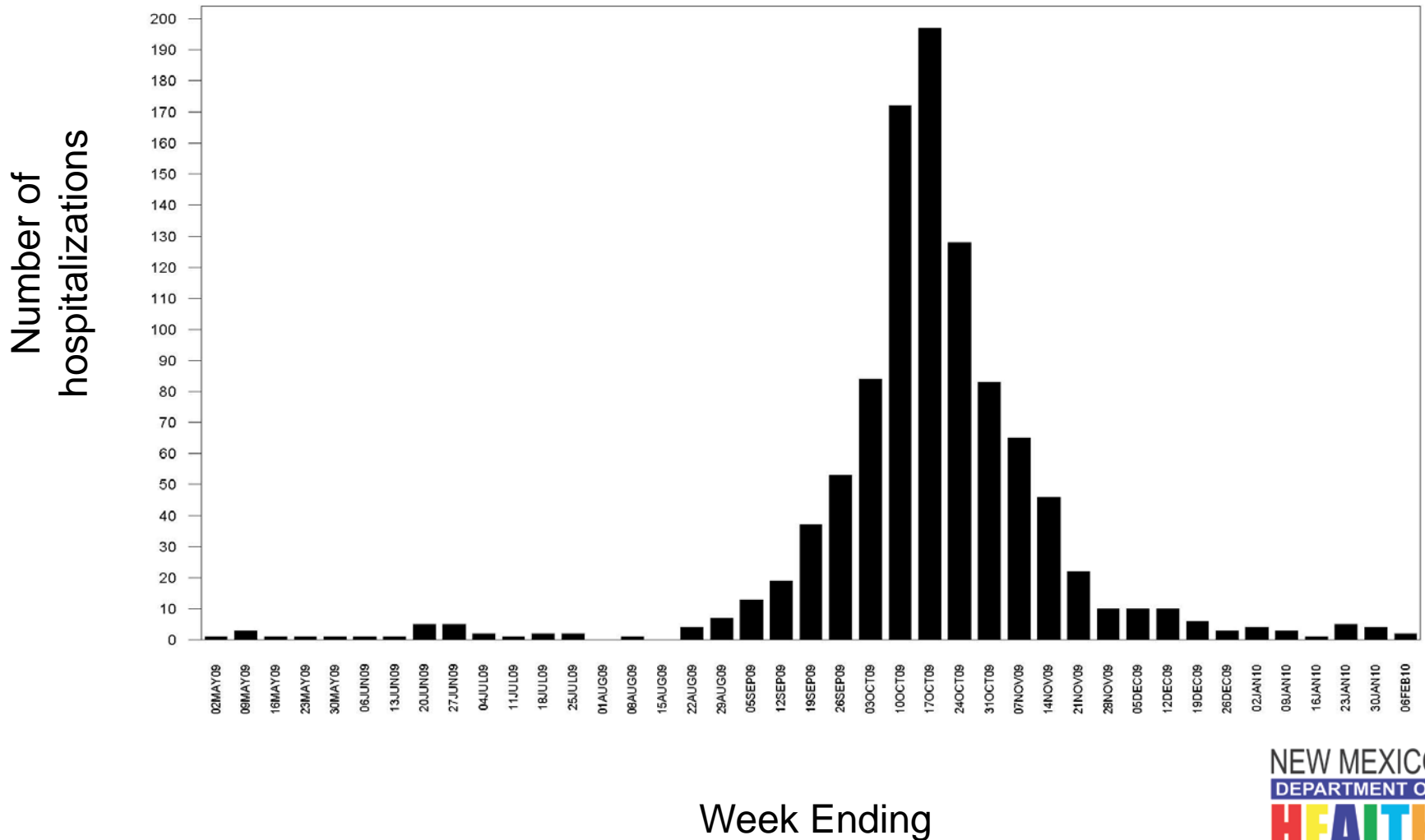


\* TX & CA viruses were genetic matches with material from swine, avian, and human influenza strains = **a novel influenza virus**

# Percentage of ILI Visits to Sentinel Sites and Percentage of Positive Influenza Tests, 2009 – 2010 Season



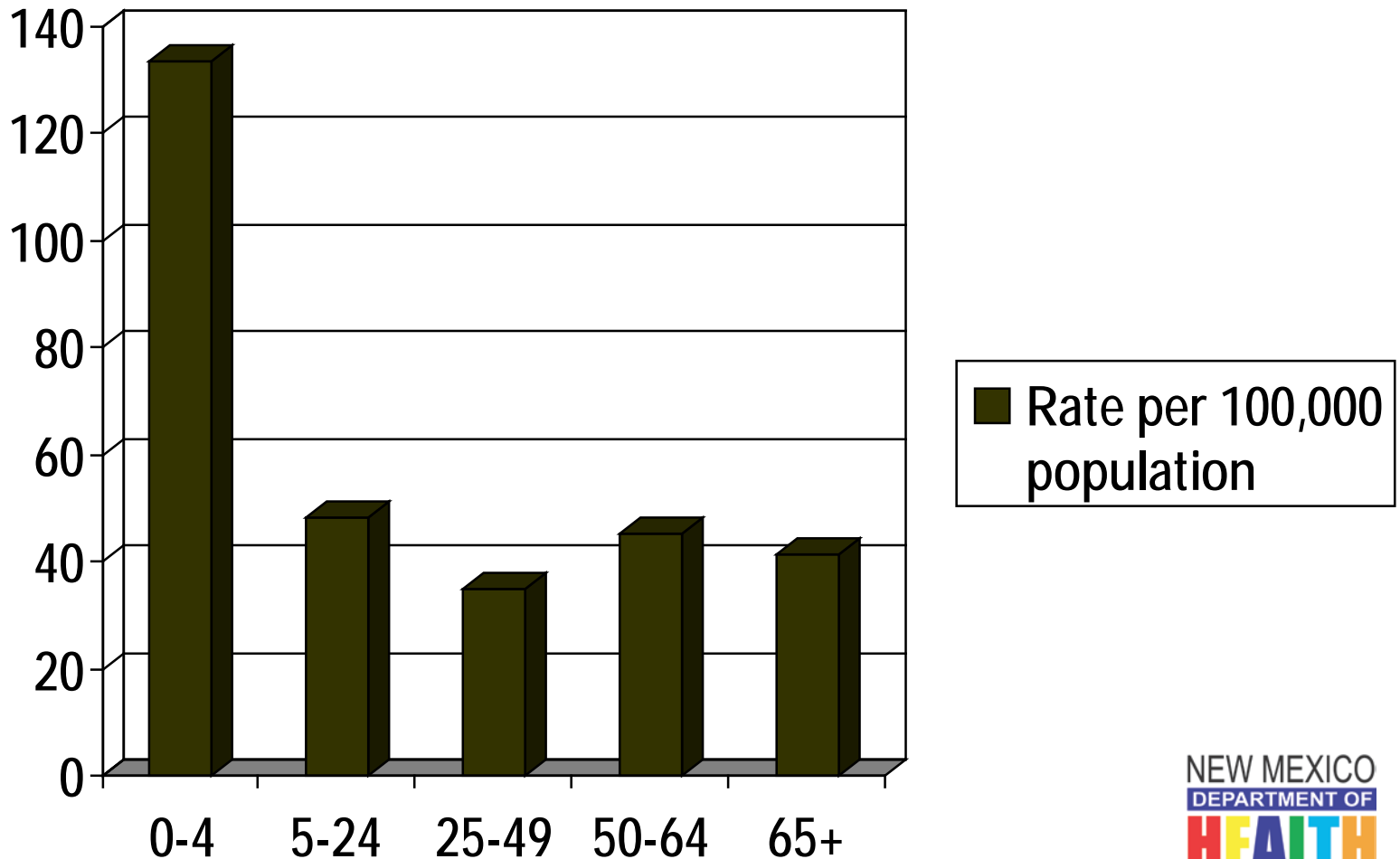
# Lab-confirmed Influenza Hospitalization by Admission Date, 2009-2010 Season



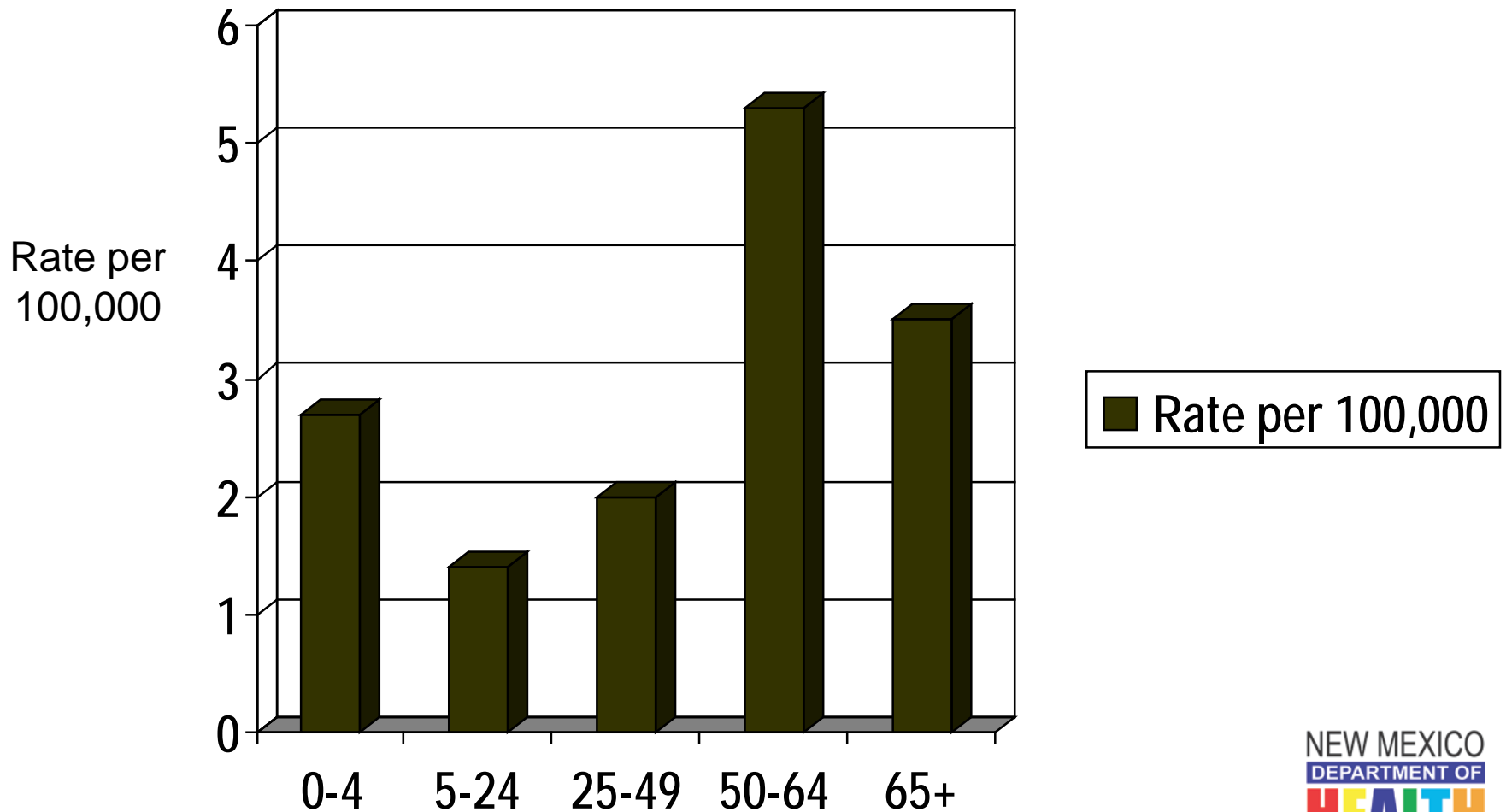
# New Mexico Lab-Confirmed Influenza Hospitalizations and Deaths

- NM Influenza Hospitalizations
  - Total: 1,047
  - Rate: 48.8 per 100,000
    - Females: 51.3%    Males: 48.7%
- NM Influenza Deaths
  - Total: 56
  - Rate: 2.7 per 100,000
    - Females: 41.1%    Males: 58.9%

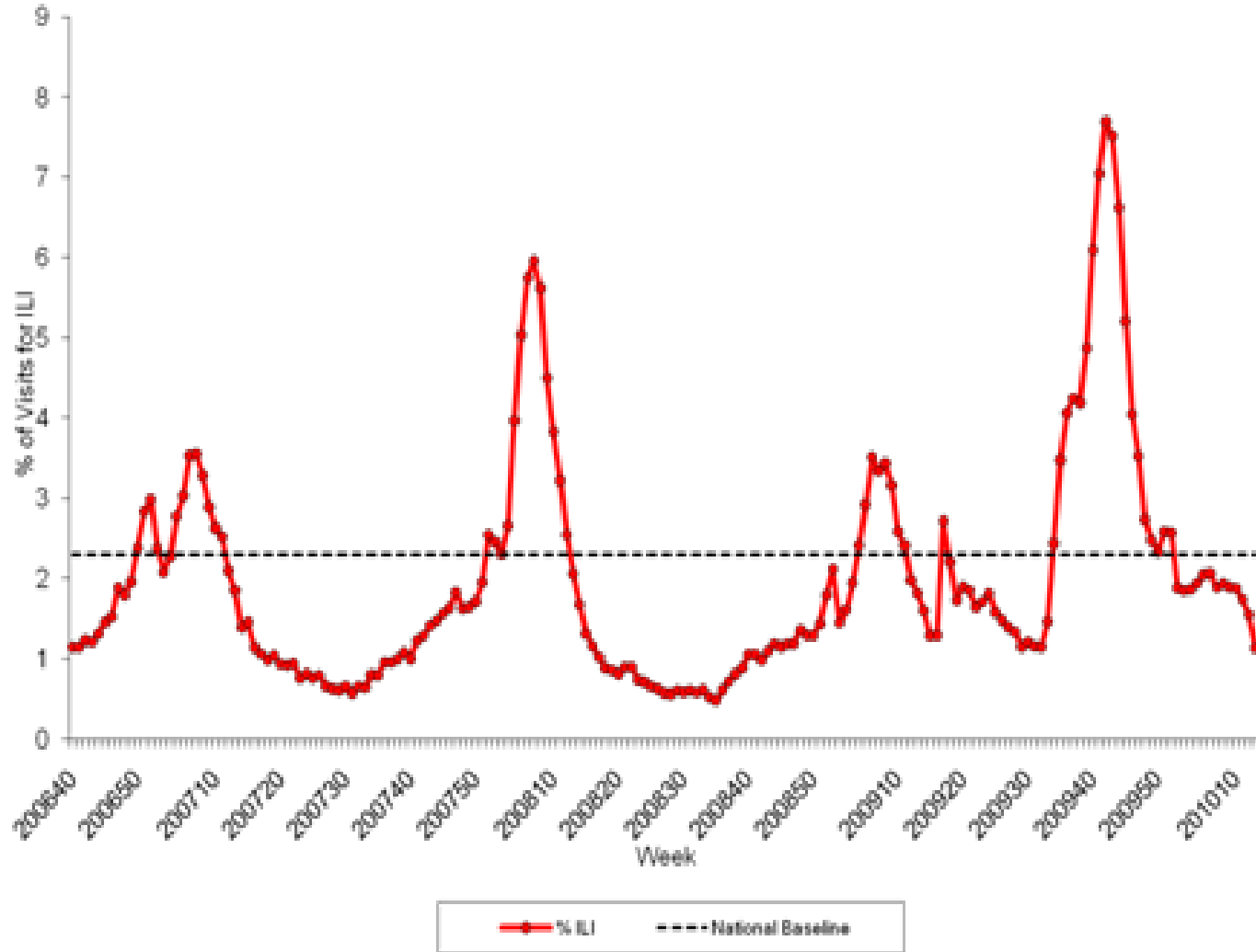
# Influenza Hospitalization Rates by Age Group



# Influenza Death Rates by Age Group



Percentage of Visits for Influenza-like Illness (ILI) Reported by the U.S. Outpatient Influenza-like Illness Surveillance Network (ILINet), Weekly National Summary, October 1, 2006 – April 3, 2010

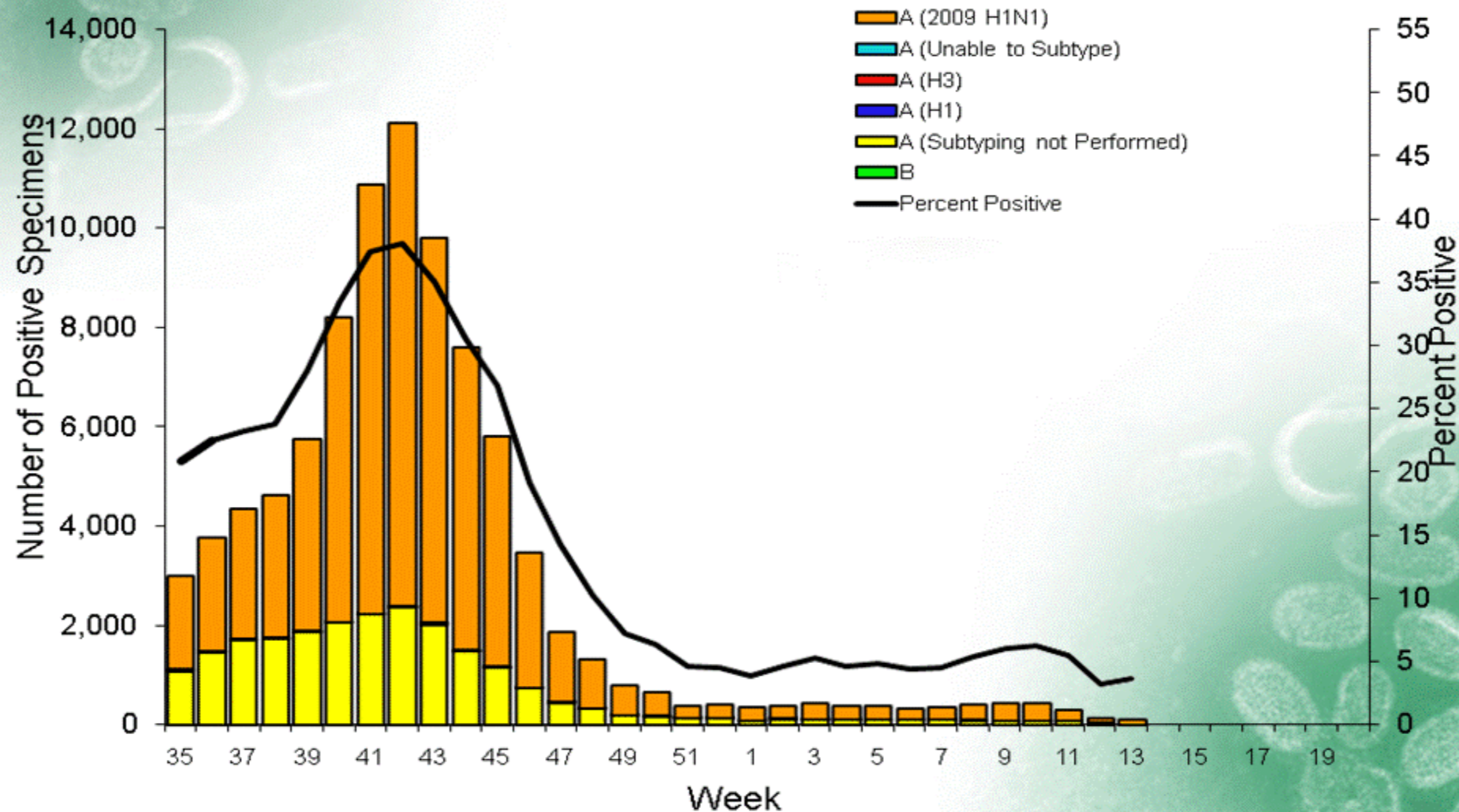


# FLUVIEW



A Weekly Influenza Surveillance Report Prepared by the Influenza Division

## Influenza Positive Tests Reported to CDC by U.S. WHO/NREVSS Collaborating Laboratories, National Summary, 2009-10



# Conclusions

- 2009 -10 season was: more intense by ILI peak; severe by hospitalization numbers and had great impact on certain population groups (and was long!)
- Lab and hospital data correlated well with ILI (lab slightly early; hospital activity later)
- Predominant strain 2009 pandemic H1N1

# Future Plans

- Review sentinel sites for population representation
- Continue laboratory network reporting
- Improve mortality surveillance in collaboration with OMI and VRHS
- Continue border surveillance
- Hospital surveillance to expand and be maintained under EIP

# Thank you!

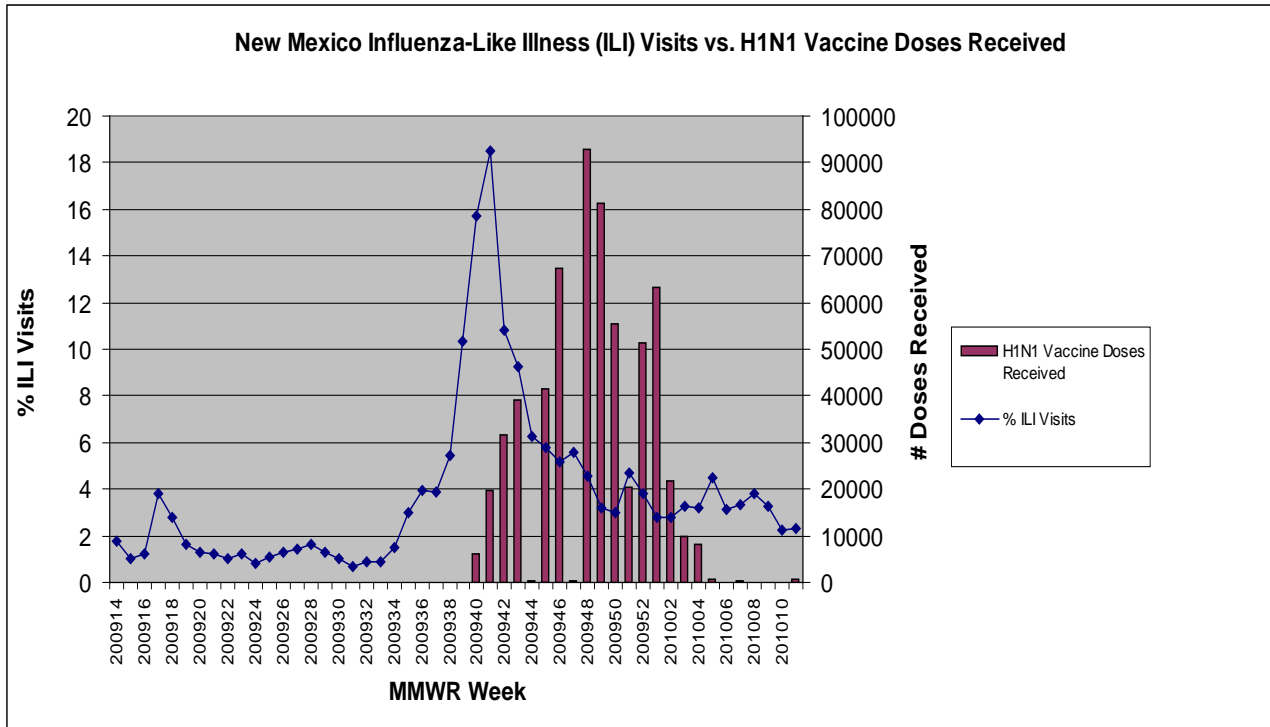
- **Infection Preventionists**
- **NM DOH staff including Infectious Disease Epidemiology Bureau and Bureau of Vital Records and Health Statistics**
- **Health care providers, administrators, and staff**
- **Emerging Infections Program**
- **Office of the Medical Investigator**
- **Laboratories**

# Questions?

Contact info:

[catherine.avery@state.nm.us](mailto:catherine.avery@state.nm.us)

505-827-0083



I. Graph: Visits for Influenza-like Illness (ILI) versus Number of Doses Received of H1N1 Influenza Vaccine